

CK710-12G

1920×1200 Resolution, 2000 nit brightness, 12G-SDI and HDMI 2.0



7" HDMI2.0 / 2×12G-SDI Ultra Brightness On-Camera Monitor

On-camera monitor for professional camcorder & DSLR
Application for taking photos & making movies.



ULTRA BRIGHTNESS

2000

nit

Featuring an amazing 2000 nit Ultra Bright LCD screen, with the sun readability therefore the gear suitable for any innovative outdoor framing. Mounted on top of the camera, to make it the "Brightest Scenery" .



HDR

When HDR is activated, the display reproduces a greater dynamic range of luminosity, allowing lighter and darker details to be displayed more clearly. Support ST2084 300 / ST2084 1000 / ST2084 10000 / HLG.



HDR OFF



HDR ON

3D-LUT

3D-LUT is a table for quickly looking up and output specific color data. By loading different 3D-LUT tables, it can quickly recombine color tone to form different color styles. Built-in 3D-LUT, featuring 17 default logs and 6 user logs.

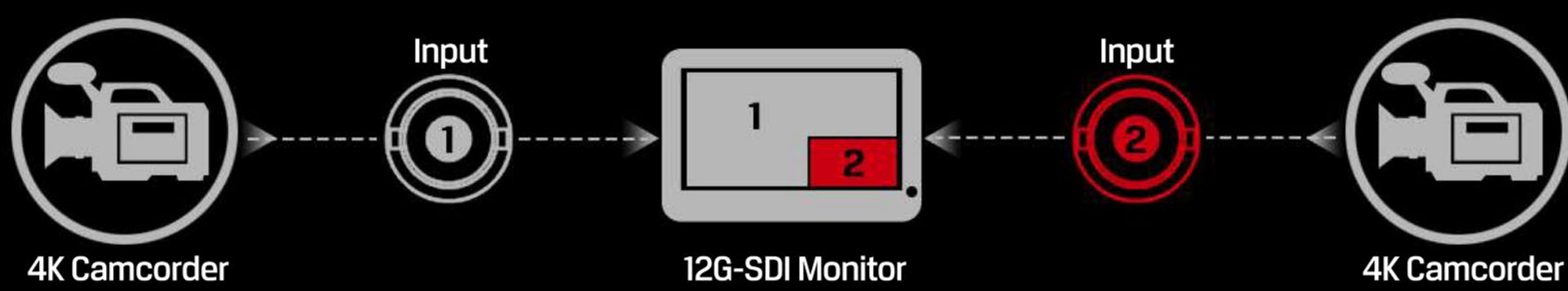




CK710-12G

BROADCAST

It is possible to receive 2× 12G-SDI signals and display at the same time through the picture-in-picture function, the size and position of which can be adjusted.



Equipped with 12G-SDI input/output interfaces, it can support up to 4096×2160 60p & 3840×2160 60p signal.



HDMI 2.0 VIDEO SHOOTING

Supports HDMI signals up to 4K 60Hz which is compatible with the latest DSLR cameras on the market with an HDMI 2.0 interface.



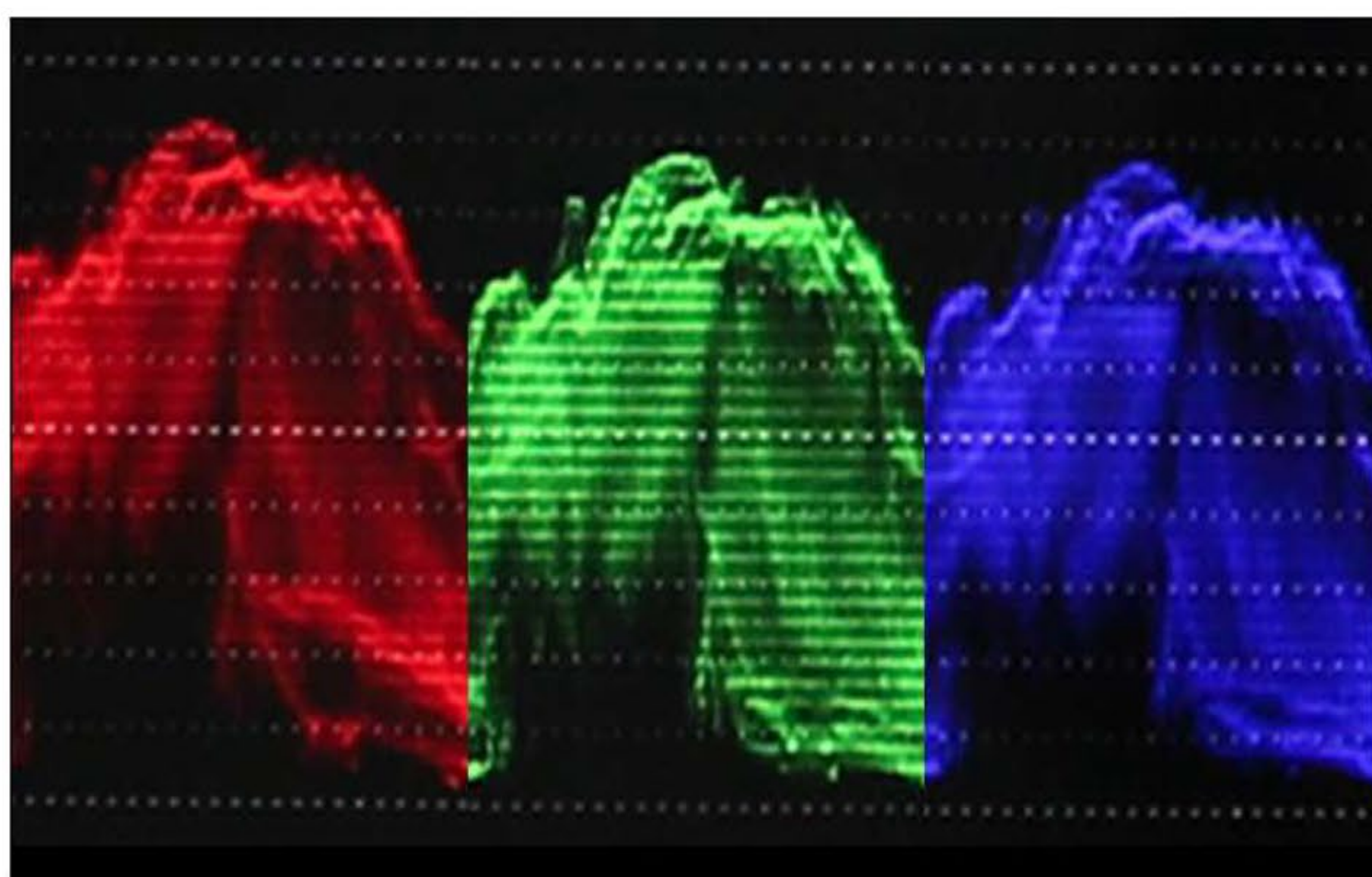
Equipped with HDMI 2.0 input/output interfaces, it can support up to 4096×2160 60p & 3840×2160 60p signal.



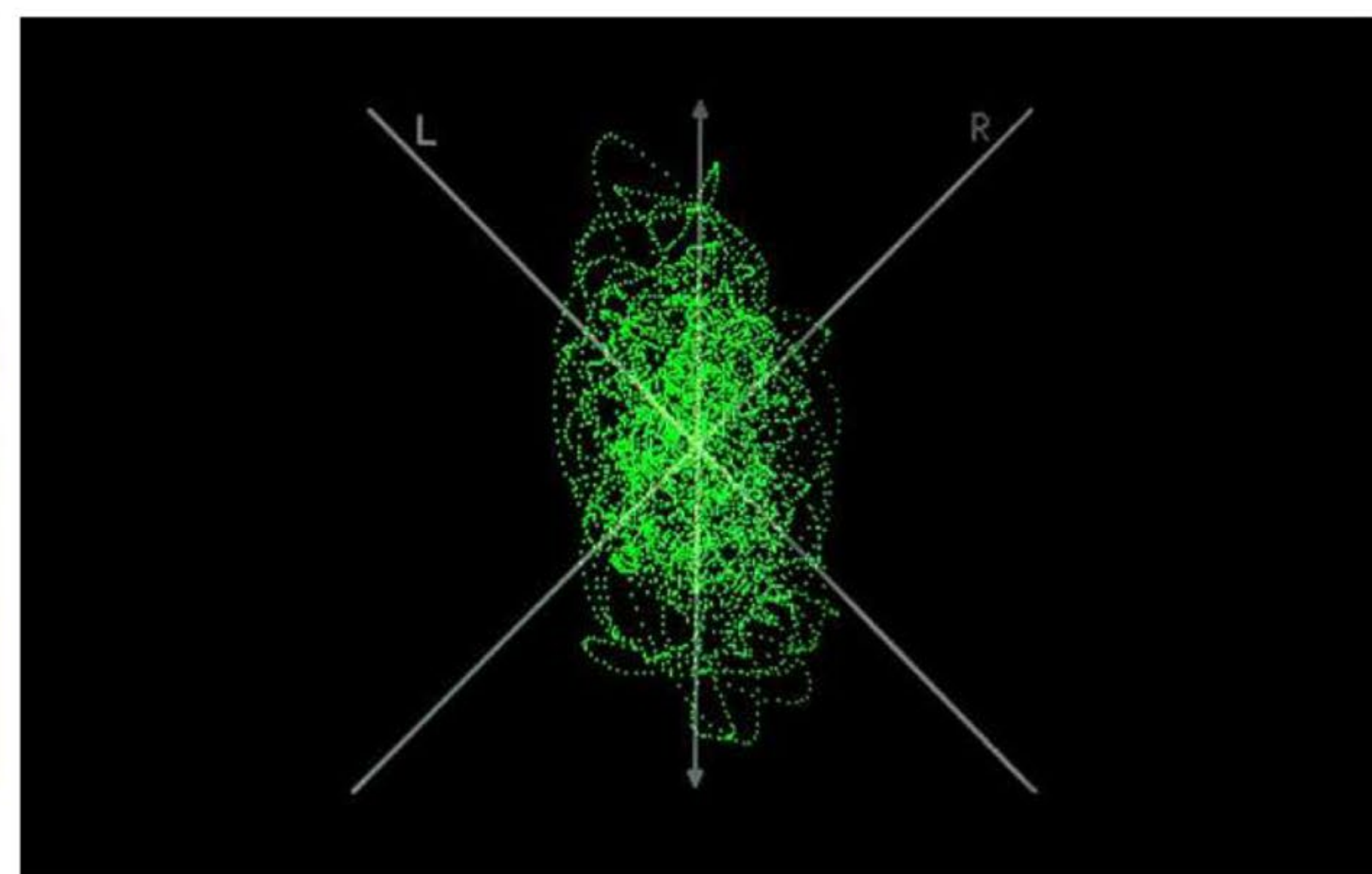
CK710-12G Picture-In-Picture

A sub image can be superimposed on main image to monitor two input signals at the same time. The size, position and signals of the sub image can be adjusted.

Camera Auxiliary Functions



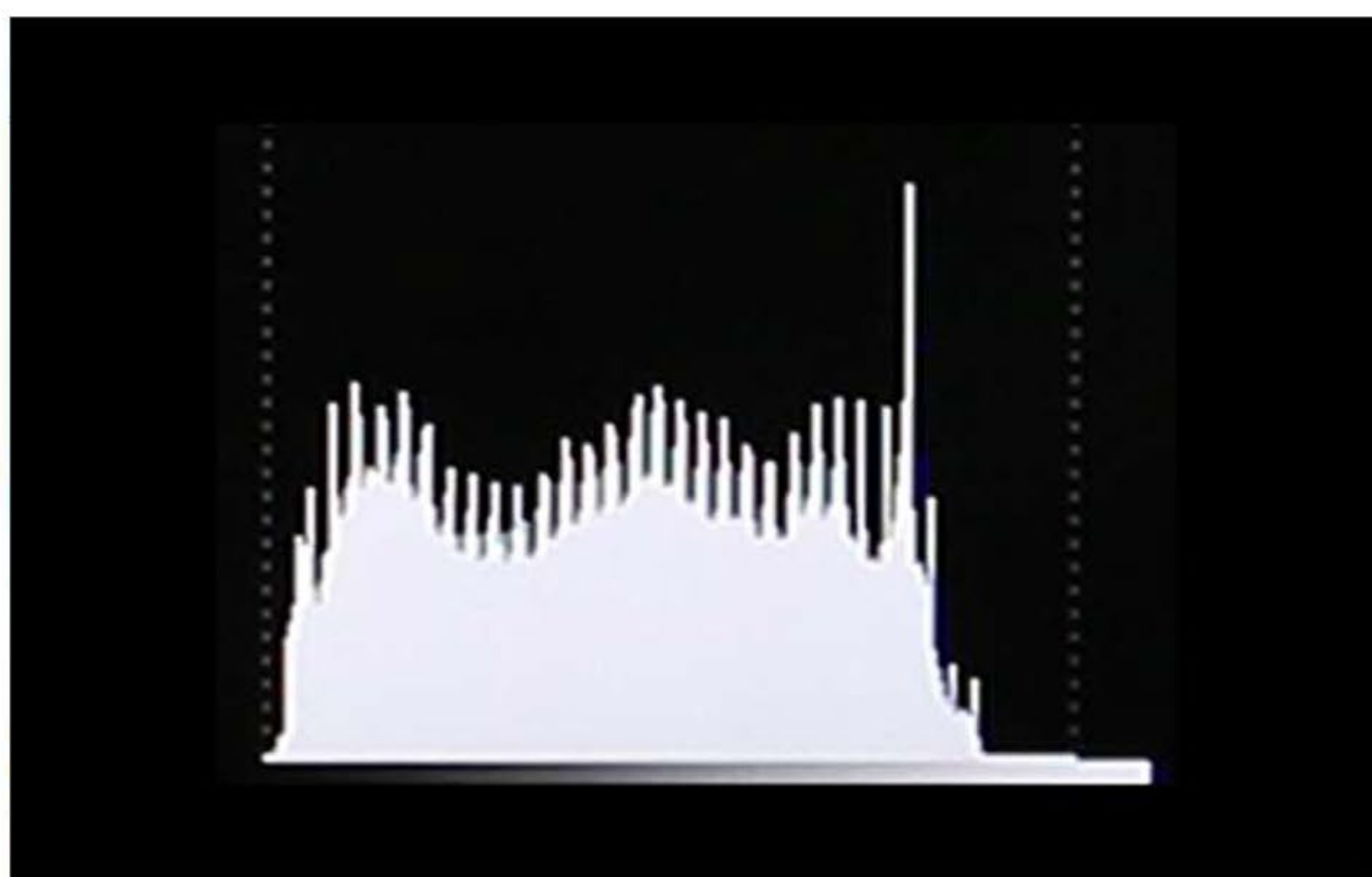
WAVEFORM
(FULL SCREEN)



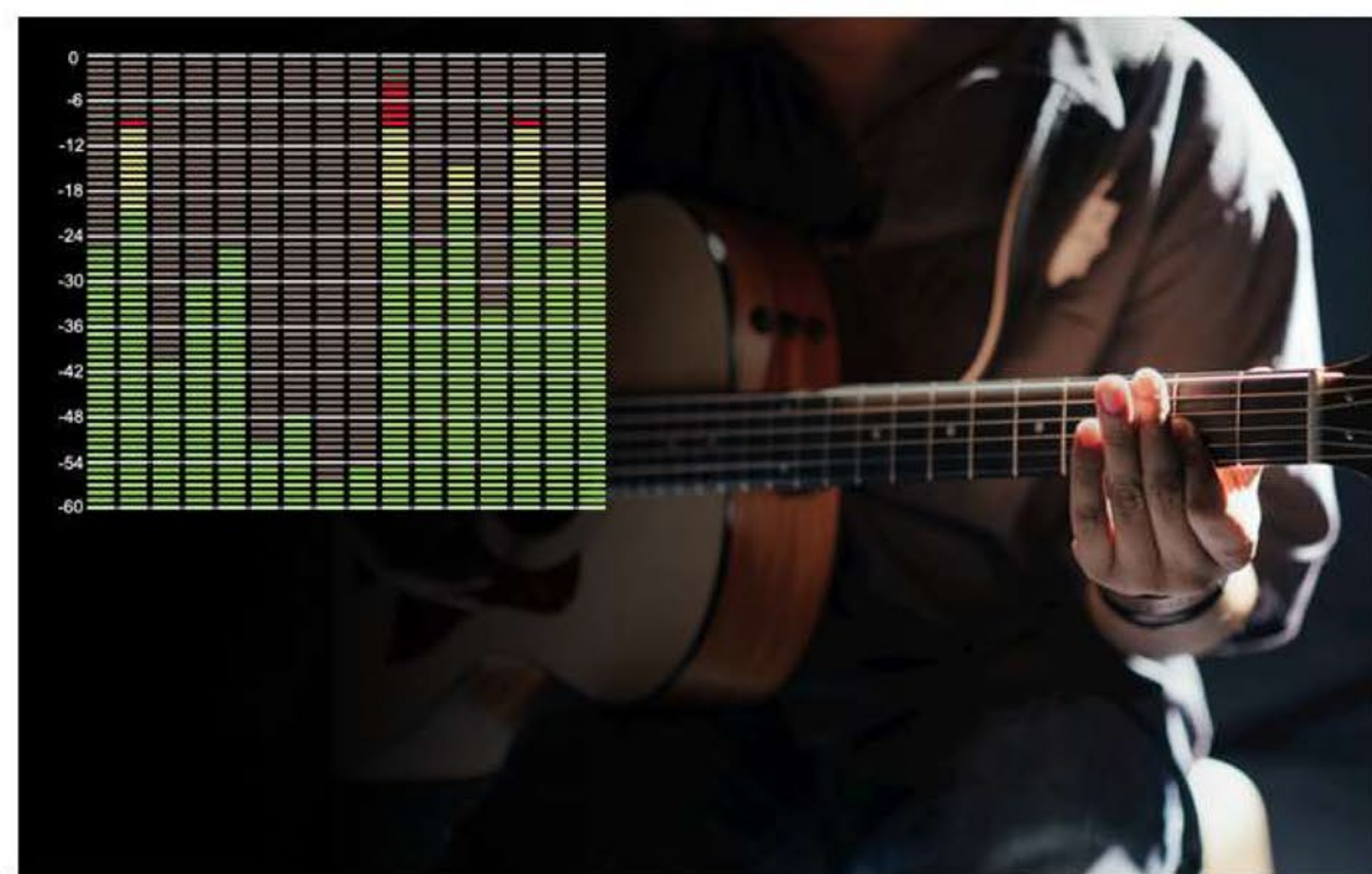
AUDIO VECTOR
(FULL SCREEN)



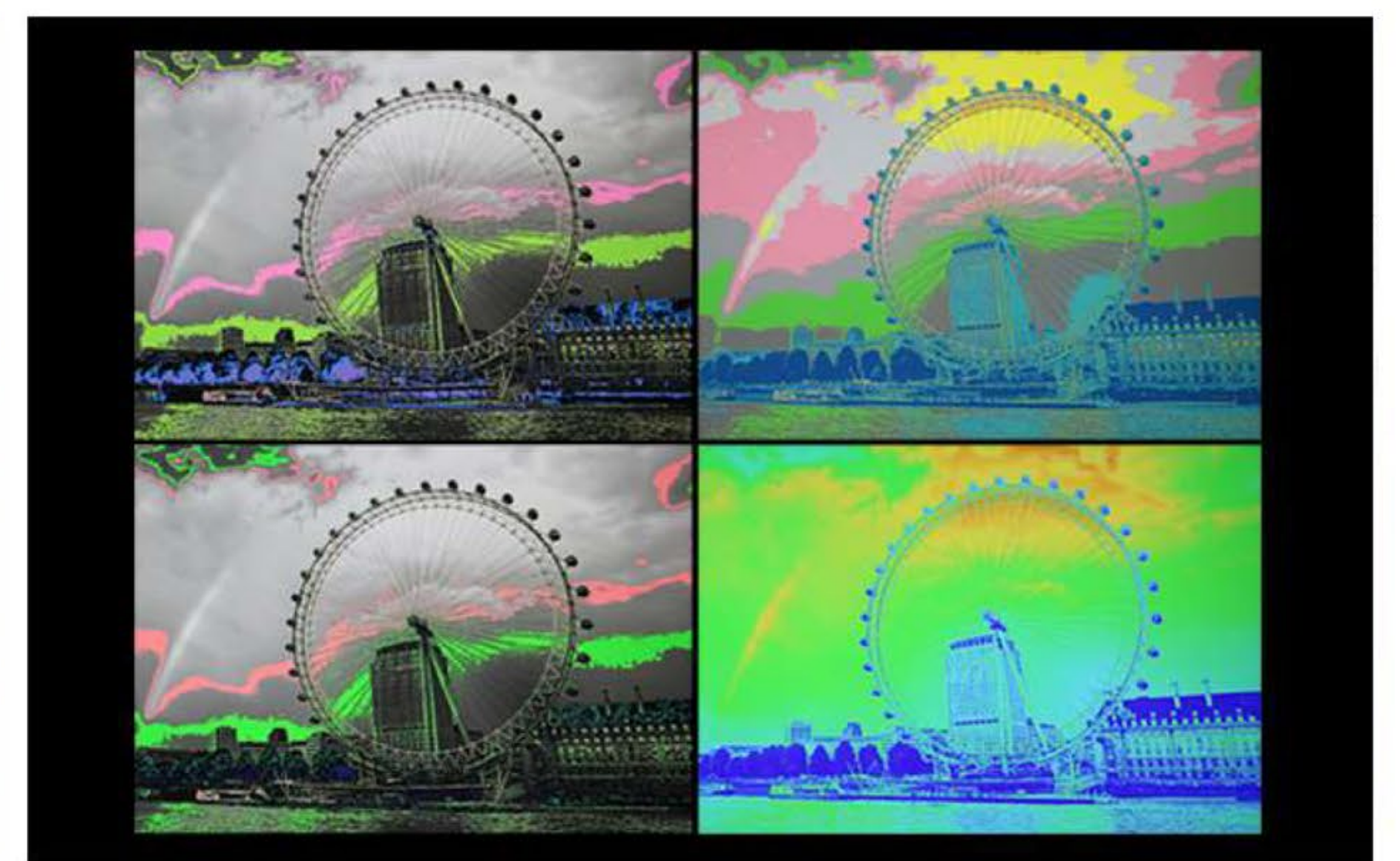
PEAKING



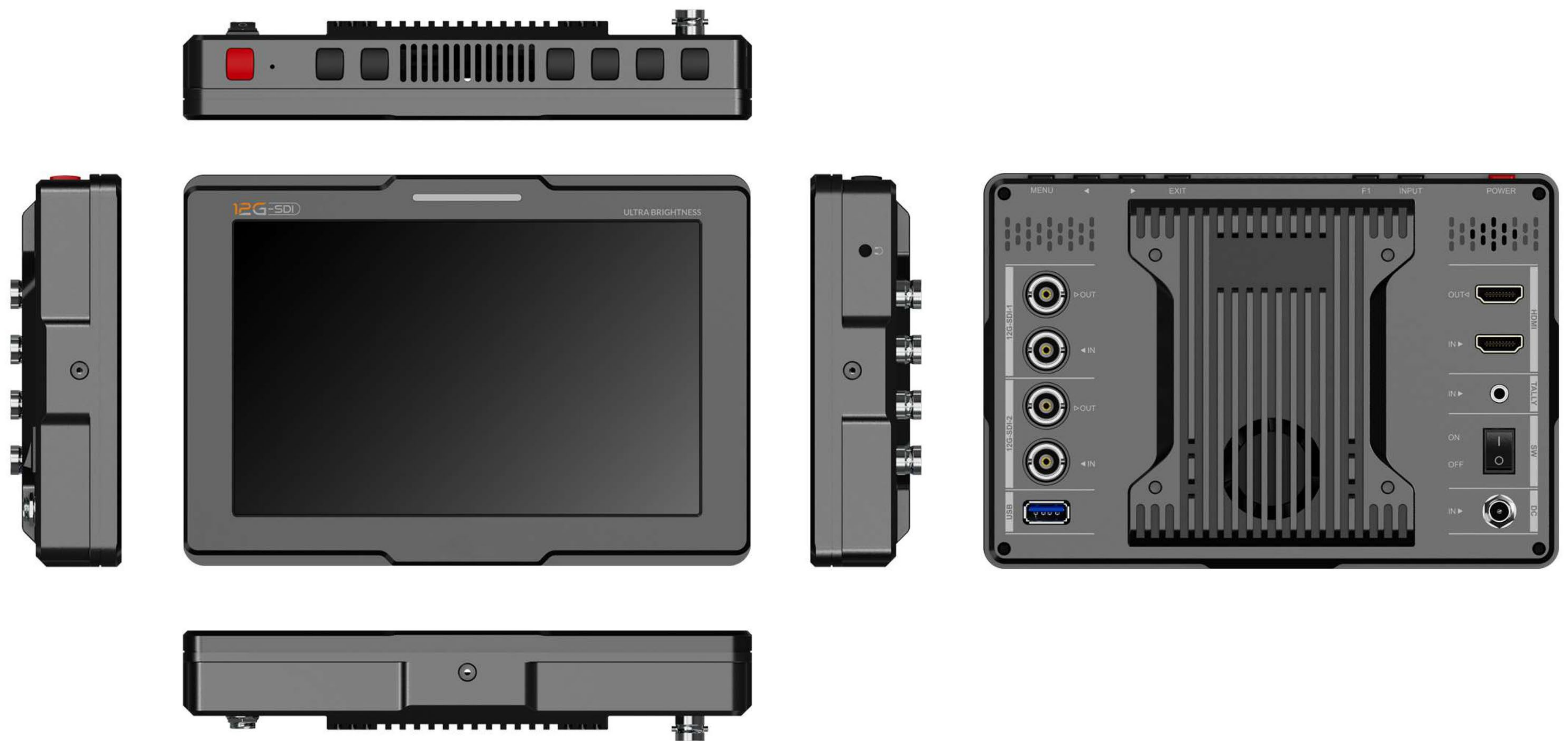
HISTOGRAM
(FULL SCREEN)



LEVEL METER



FALSE COLOR



DISPLAY	Panel	7"
	Physical Resolution	1920×1200
	Aspect Ratio	16:10
	Brightness	2000 nit
	Contrast	1200:1
	Viewing Angle	170°/ 170°(H/V)
	HDR	ST2084 300/1000/10000/HLG
	Supported Log formats	SLog2 / SLog3 / CLog / NLog / ArriLog / JLog or User...
	Look up table (LUT) support	3D LUT (.cube format)
SIGNAL INPUT	SDI	2×12G-SDI
	HDMI	1×HDMI 2.0
	Tally	1
SIGNAL LOOP OUTPUT	SDI	2×12G-SDI
	HDMI	1×HDMI 2.0
SUPPORT FORMATS	SDI	2160p 60/50/30/25/24, 1080p 60/50/30/25/24, 1080pSF 30/25/24, 1080i 60/50, 720p 60/50...
	HDMI	2160p 60/50/30/25/24, 1080p 60/50/30/25/24, 1080i 60/50, 720p 60/50...
AUDIO IN/OUT	SDI	16ch 48kHz 24-bit
	HDMI	8ch 24-bit
	Ear Jack	3.5mm
	Built-in Speakers	1
POWER	Input Voltage	DC 7-24V
	Power Consumption	≤20W (12V)
ENVIRONMENT	Operating Temperature	0°C~50°C
	Storage Temperature	-20°C~60°C
OTHER	Dimension(LWD)	186mm × 128mm × 32.5mm
	Weight	785g

STANDARD



12V 2A DC Power Adapter



Suitcase



U-shaded Bracket



VESA 75 mm Battery Plate
(For Sony NP-F Series)



Tally Connector